



## #03 Functions

Total points **5/5** ?

Name \*

.....

Section \*

✓ Let  $A=\{1,2,3\}$ ,  $B=\{2,3,4\}$ , then which of the following is/are function(s) from  $A$  to  $B$ ? \*

$\{(1,2),(1,3),(2,3),(3,3)\}$

$\{(1,3),(2,4)\}$

$\{(1,4),(2,2),(3,3)\}$

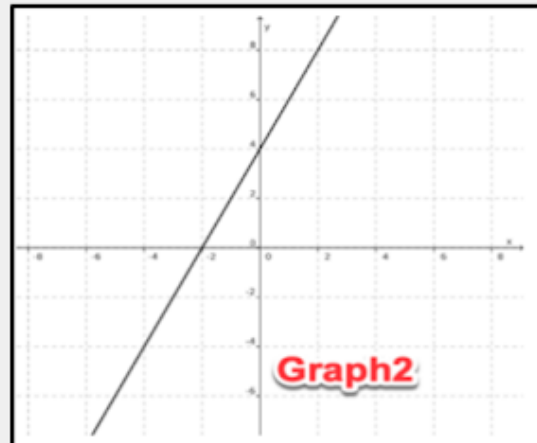
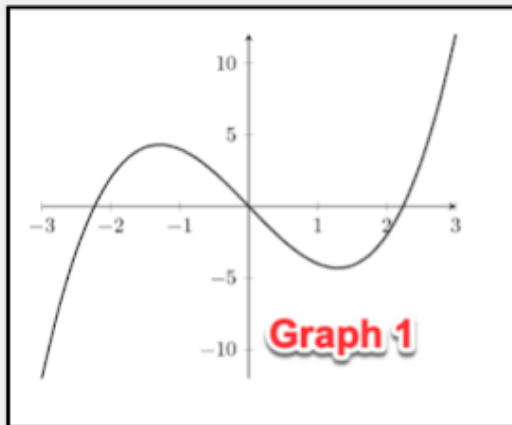


$\{(1,2),(2,2),(3,2)\}$



✓ Look at Graph 1 and Graph 2. Which of the following statement is correct? \*

1/1



- Graph 1 is a function but Graph 2 is not.
- Graph 2 is a function but Graph 1 is not.
- Both are functions. ✓
- None is a function

✓ What are the pre-image(s) of 39 under  $f$ ? \*

2/2

$f : \mathbb{R} \rightarrow \mathbb{R}$  is a function given by  $f(x) = x^2 + 3$

- 6,6 ✓
- 6
- 6
- None of the above

This form was created inside of Sanskriti School.

Google Forms

